

THE PALMS SUBDIVISION

Being part of the NW 1/4 of Section 23, T1N,
R10E, Liberty Township, Hancock County, Ohio.

23.177 Total Acres

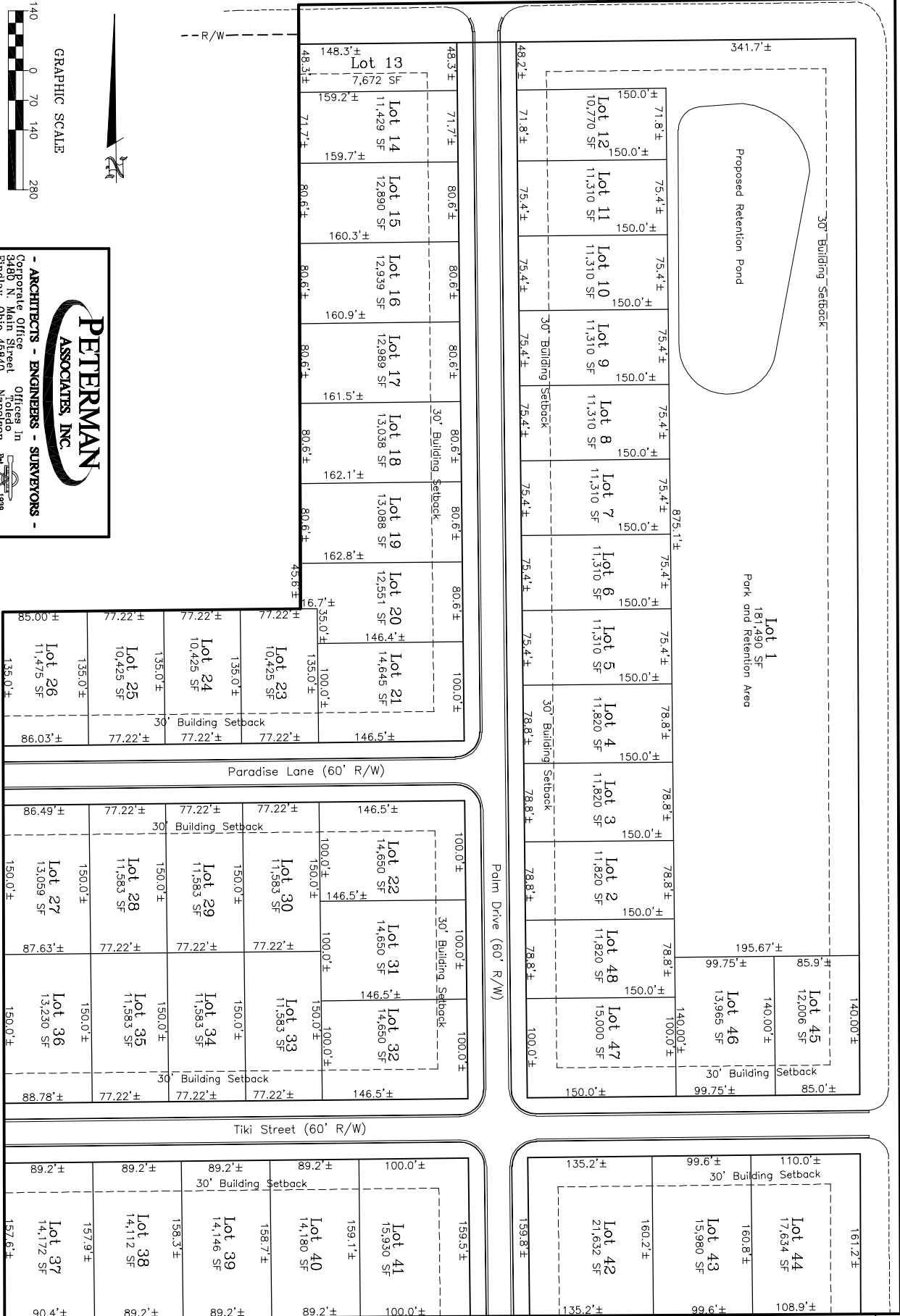
County Road 144 (50' R/W)

County Road 88 (70' R/W)

R/W

R/W

R/W



GRAPHIC SCALE



PETERMAN ASSOCIATES, INC.
- ARCHITECTS - ENGINEERS - SURVEYORS -
Corporate Office
3480 N. Main Street
Pindley, Ohio 45840
Office (419)422-6672
Fax (419)422-9466
Offices In
Toledo
Napoleon
Bellaire
1889